

[illegible]

Parts™ and Accessories are made of the highest quality material and designed to provide maximum performance and minimum down-time. Your customers depend on you. You can depend on Rotary.



Adapter and Mounting Rack

Required for raising minivans with running boards. Includes four adapters, mounting rack and hardware.

- 1,750 lbs. (794kg) capacity per adapter
- Adjustable range provides 4 7/8" (124mm) to 6 3/4" (171mm) additional height
- Rubber contact surface protects undercoated surfaces
- Fits any frame-engaging Rotary Lift® manufactured since October 1973



Model# FJ6137

Polymer Pad Adapter Kits

Polymer pad adapters for use with new car undercoating. Includes four adapters, mounting rack and hardware.

- 2,500 lbs. (1134kg) capacity per adapter
- Fits any frame-engaging Rotary Lift manufactured since October 1973
- Rubber contact surface protects undercoated surfaces



Model# FJ6138 (Adds 1/2" 12mm)

Model# FJ6190 (Adds 1" 25mm)

Model# FJ6139 (Adds 2 1/2" 63mm)

Auxiliary Adapters

Auxiliary adapters for use when raising certain vans or pickups. Includes four adapters, mounting rack and hardware.

- 2,500 lbs. (1134kg) capacity per adapter
- Fits any frame-engaging Rotary Lift manufactured since October 1973



Model# FJ6212KITYL

(includes (4) 7 3/8" (187mm) adapters)

Model# FJ6115 (includes (4) 9 3/8" (238mm) adapters)

Model# FJ6195 (includes (2) 12 3/8" (315mm) adapters)



Extended Height Adapter

Required to lift 1988 or newer General Motors® GMT400 pickup trucks. Includes four adapters, mounting rack and hardware.

- Capacity 2,500 lbs. (1134kg) maximum per adapter
- Overall height: 9" (228mm)
- Fits any frame-engaging Rotary Lift manufactured since October 1973



Model# FJ6133

Thread-Up Adapter

Auxiliary adjustable thread-up adapter with rubber pads allow for protection of underbody vehicle components or undercoating. For raising certain vans or pickups. Fits models SPOA7-RA, SPOA9-RA, SL210-RA, A8-RA, A10-RA, and SL210-RA ONLY.



Model# FJ6159 (for 9,000 lbs. (4082kg) capacity lifts)

Model# FJ6197 (for 10,000 lbs. (4536kg) capacity lifts includes (4) FJ6182 adapters)

Model# FJ6200 (for SPO12-10 series and above) includes (4) FJ6201 adapters

RA Adapter

Polymer pad RA adapters thread-up to allow protection of the vehicle underbody components or undercoating for no metal to metal contact. Also available for use with stackable inserts. Fits models SPOA7-RA, SPOA9-RA, SL210-RA, A8-RA, A10-RA, and SL210-RA ONLY.



Model# FJ6202

Telescoping Arms

Three-stage telescoping arms for accommodating smaller vehicles without excessive maneuvering of vehicle. Kits include four arms.



Model# N2224/N2225

(SPOA10, SPOA10NB, 500 series)

Model# N2244 (SPOA7, SPOA9, 200-400 series)

Model# T100248 (SL210, SL29, 400 series)

Model# T100210 (SL29, 300 series)



Adapter Extensions

Provides additional lifting height when vehicles require additional clearance or use on front or rear to level vehicle on lift. Fits models SPOA7-RA, SPOA9-RA, SL29RA, A8, A10, and S10 ONLY. Includes four 3 1/2" (89mm) and four 5" (127mm) adapter extensions, mounting rack and hardware.



Model# FJ7880 (adapter extension kit)

SP012 Adapter Extensions:

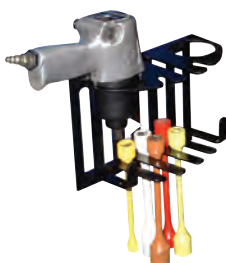
Model# FJ6180 (2 1/2" extension)

Model# FJ6143 (4" extension)

Model# FJ6144 (8" extension)

Tool Holder

To keep tools handy for the technician, this patented tool holder keeps air guns, torque sticks, and other tools within easy reach. This accessory mounts easily in holes already drilled and tapped in the two-post column.



Model# FA5191BK

Adapters and Organizer Rack

Accommodate more vehicles quickly and easily with more adapters plus keep them organized.

- Four FJ696, four FJ697 and four FJ698 adapters
- Two piece column or wall-mounted adapter organizer rack (FJ6108)

Also available in different configurations. Ask your distributor for details.

Model# FJ6100



Extended Height Kits

Raise the overhead clearance on two-post lifts to service more vehicles at a comfortable working height. Kit includes column extensions and hardware. Also available for different models. Ask your distributor for details.

One Foot Extensions:

Model# FJ5107 (SPOA7)

Model# FJ5109 (SPOA9)

Model# FJ5111 (SPO9)

Model# FJ5157 (SPO10)

Model# FJ5155 (SPOA10NB)

Model# FJ5153 (SPOA10)

Two Foot Extensions:

Model# FJ5108 (SPOA7)

Model# FJ5110 (SPOA9)

Model# FJ5112 (SPO9)

Model# FJ5154 (SPOA10)

Model# FJ5108 (SPO10)

Model# FJ5156 (SPOA10NB)

Four Foot Extensions:

Model# FJ5114 (SPO9)



Air/Electric Utility Boxes

- Two 110v electric outlets and air connection
- Mounts easily on any column and provides quick access to utilities
- The filter/regulator/lubricator helps extend the life of your air tools

Four-Post Lifts:

Model# FA915 (SM/SMO with filter/regulator/lubricator)

Model# FA916 (SM/SMO without filter/regulator/lubricator)

Two-Post Lifts*:

Model# FA5911 (with filter/regulator/lubricator)

Model# FA5910 (without filter/regulator/lubricator)

* Fits all two-post lifts except SP84 and SP74 series lifts



Turning Radius Gauge

Bolt-on stainless steel radius gauge for performing two-wheel alignments.

Model# FA5153 (1 gauge)



Four-Wheel Alignment Kit Upgrades

- Rollback version ideal for 3-D alignment equipment
- Rear slip plate kit and necessary hardware (drilling and tapping required)
- Stainless steel radius gauge kit available
- Recommended for use with two rolling jacks for performing four-wheel alignment
Runways not included

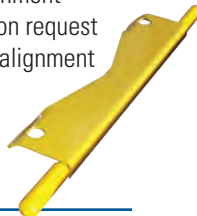


Model# S100074 (SM/SM0123, SM/SM014, SM120/121/122 with stainless steel radius gauges)

Model# S100083 (SM/SM0123, SM/SM014, SM120/121/122 with carbon steel radius gauges)

Model# S100080 (SM/SM0123, SM/SM014, SM120/121/122 without radius gauges)

Adapter filler kit for Rotary® alignment racks and bolt-on alignment kits to accommodate new three dimensional visual alignment instrumentation systems. Free upon request with purchase of any new Rotary alignment rack or bolt-on kit. Standard color is yellow for high visibility.

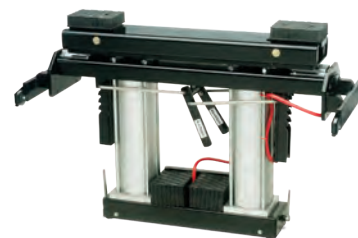
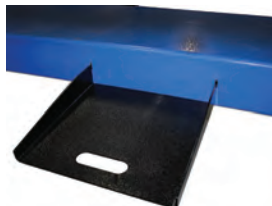


Model# FC7117

Removable Work Step

Fits 14K four-post lifts with slots as shown.

Model# FC5663BK



Swing Air Jacks

Swing air jacks add versatility and utility to your lifts enabling technicians to do a wider variety of service work at their current locations.

4,500 lbs. (2041kg) capacity:

Model# SJ4500 (SC9i)

6,000 lbs. (2722kg) capacity:

Model# SJ6000 (AR0i/ARO/SM0)

8,000 lbs. (3628kg) capacity:

Model# SJ8000 (AR014/SM014)

Rolling Jacks

Increase your service opportunities with rolling jacks by lifting front, rear or all wheels off the runways for brake, tire, suspension and two or four-wheel alignment work.

- Roll out of the way to provide unobstructed work space when not in use
- Drop in rubber adapters made with high durometer rubber.
Sizes: 1 1/2" (38mm) and 3" (76mm)
- Easy glide wheels roll smoothly in the track. A sweeper pushes debris away from the wheel



4,500 lbs. (2041kg) capacity:

Model# RJ4500 (SM90/91, AR90, and QL4P)

6,000 lbs. (2722kg) capacity:

Model# RJ6000 (SM/SM0123 and AR/AR0123)

Model# RJ6000-R (SM120/121, SM/SM0122 and AR/AR0122 prior to April 2000)

7,000 lbs. (3176kg) capacity:

Model# RJ7000 (SM/SM014)

Higher capacities available. Ask your distributor for details.

Sliding Adapter Extension Kit

Model# SB1000YL



Ramp Kits

- Oil resistant, non-skid coating
- Includes two ramps and hardware



Extended Ramps for Low-Clearance Vehicles:

Model# S100006

(SM012i, SM/SM0122/123)

Model# S100076

(SM/SM014, SM101)

Standard Length Ramps for Drive-Thru Bay Operation:

Model# S100005

(SM012i, SM/SM0122/123, SM101)

Model# S100075

(SM/SM014, SM101)

Extended Height Adapter Kit

Extended height adapter kit for rolling jack models RJ4500, RJ6000, RJ7000 and RJ9000 to pick-up a Land Rover Discovery and other SUV straight axle type vehicles.

Set of Two: Model# SB100003



Sets for the FC5657/RJ6000:

Model# SB100009

Model# SB100010

Model# SB100011

Model# SB100012



Power Unit Stand

Power unit stand for use with low rise lifts when mounting single power unit. Power unit not included.

Model# FJ864



Liquid Removal System

Liquid removal system designed to evacuate fluids from the SmartLift containment. Includes a 16 gal. drum, vacuum pump, dolly and suction line.

Model# T100183



Rolling Drain Pans and Accessories

Low profile rolling drain pans with splash guard, drain valve and dust cap.

30 gallon (114 liter):

Model# FC5967 (SM/SM0122/123, SM/SM014, SM180)

30 gallon (114 liter):

Model# FC5968 (SM300)

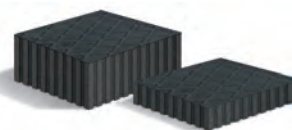


Model# FC5247

Eight foot oil drain hose with quick connect fitting.

Flat Polymer Pad Adapters

Polymer pad adapters for use with pad lifts and some rolling jacks. Protects vehicles with factory applied undercoating. 3,000 lbs. (1361kg) capacity per adapter. Two required.



Model# FJ2427 (1

1/2" (38mm) tall)

Model# FJ2428 (3" (76mm) tall)

Three-Position Pad Adapters

The three-position adapters have rubber contact pads on three sides increasing the positioning capabilities to get the maximum benefit. The height added by these adapters excels the versatility of the lift. (1 adapter)



Model# 1010907

Extended Height Adapter for Pad Lifts

Extended height adapters for pad lifts for use when lifting certain trucks, vans and SUV's on pad lifts.

Model# FJ6211 (includes (4) 7" (178mm) FJ6205 truck adapters)



Ramp Kits

- Oil resistant, non-skid coating
- Includes two ramps and hardware

Extended Ramps

(16" 406mm longer) for

Low-Clearance Vehicles:

Model# S100029 (RFP7, RFP7XLT)



Aluminum Extended Ramps

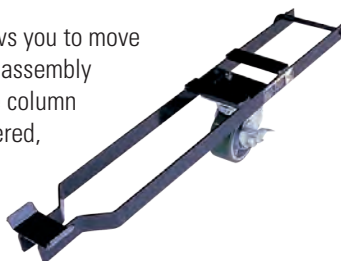
Model# S100047 (RFP7, RFP7XLT)

Standard Length Ramps for Drive-Thru Bay Operation:

Model# S100030 (RFP7, RFP7XLT)

Caster Kit

Caster kit allows you to move the lift. Wheel assembly attaches to the column and when lowered, raises runways and columns off the floor.



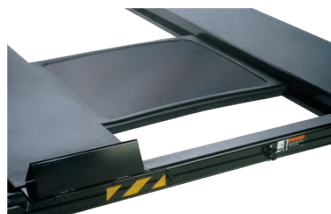
Set of Four:

Model# S100020

(RFP7, RFP7XLT)

Drip Trays

Drip trays protect a vehicle stored under the lift from potential leaking fluid above. Includes two trays.



Model# S100031 (RFP7, RFP7XLT)

Jack Tray

Raise your vehicle off the runways for wheel service. For use with bottle jacks. (not included)

Model#

S110144

(RFP7)

Model#

S110143

(RFP7XLT)



Solid Decking

Solid deck kit rests between the runways providing storage on the top of a standard lift. 7,000 lbs. (3175kg) capacity total.

Model# S100028

(3pc. for RFP7)

Model# S100027

(4pc. for RFP7XLT)



Rotary Lubricants

The Rotary lubrication line has been developed exclusively for Rotary to increase performance and reduce damage caused by friction and wear.

Model# T140208 Rotary

Grease

Cartridge (14oz.)



Model# T140209 Rotary Oil Fortifier

Bottle (16oz.)

Model# T140210

Rotary Penetrating Oil

(12oz. aerosol can)

Door Defender™

Rotary's new door defender allows technicians to easily enter and exit the vehicle without damaging their customer's vehicles.

The door defender is a low profile solid rubber guard designed to fit over the two-post lift carriage. The N823 door defender kit includes: 1 door defender, adhesive to attach to the lift, a Rotary decal and instructions.



Model# N823

Portable Work Step

350 lbs. (159kg) capacity

Model# FC134-17



Fluorescent Work Light

The perfect addition to an air/electric utility box.

- Yellow polypropylene handle with a push button on/off switch
- High impact clear HICR lamp protector with light reflector
- 18/2 SVT 25' Thermoplastic insulated cord with a NEMA 1 1-15P molded plug
- Long life 13 watt, compact fluorescent lamp



Model# FA5933

Productivity Jacks

Portable high rise productivity jack assembly for removal and transportation of transmissions, transfer cases and other items from cars, light trucks and SUVs. With foot pedal adjustment for ease in raising and lowering components, swivel caster wheels and corrosion protection on the cylinder piston assembly. Available as 1,100 (499kg) and 4,400 lbs. (1996kg) capacity.

Model# GUWSFF5-100 (1,100lbs. (499kg) capacity 43" (1092mm) stroke no table)

Model# GA4 (adapter only)

Model# GA (adapter only)

Model# GUWSFF5-101 (1,100 lbs. (499kg) capacity with GA adapter)

Model# GUWSFF20-100 (4,400 lbs. (1996 kg) capacity. Table not included.)



Professional Automotive Service

Choose a Rotary Authorized Installer™ and Get These Guarantees:

- **Warranty.** Lifts installed by a Rotary Authorized Installer get an enhanced warranty absolutely free! An extended warranty is also available.
- **Installation guarantee.** RAls warrant their supplied materials and labor against faulty material and workmanship for one full year on new installations. Many even offer 24-hour emergency service.
- **Factory authorized.** Rotary Authorized Installers are the only companies authorized to perform warranty work.
- **Insurance.** RAls are fully covered with both general liability and completed product and operations liability insurance. This means you're protected, even after our RAI leaves your site.
- **RAI™-only products.** Rotary®'s SmartLift®, inbay® and Parallelogram products can be installed only by an RAI. It only makes sense that the highest quality, highest technology designed products should be installed to the exact highest standards of an RAI.
- **Parts.** For initial installation and later service, RAls carry the most common parts and only use Rotary Genuine Parts™ to ensure peak performance of your lift.
- **On-site training.** RAls provide training for your shop technicians as part of the installation package.
- **Information.** Service and Installation bulletins keep RAls current on the full Rotary product line. In addition, RAls have 24-hour access to technical information via the Internet and can request detailed assistance from Rotary's Customer Relationship Department.
- **Training.** All RAls receive comprehensive factory training. They also maintain their proficiency by attending ongoing training on existing and new products.
- **Tools and equipment.** RAls are equipped with the right tools and equipment to make sure the installation is right the first time and minimizes disruption to your shop.
- **Inspections.** RAls can conduct periodic lift inspections upon request or on a regularly scheduled basis.



Customer Focused Solutions

Rotary Lift® is the world leader in service bay productivity. Our focus is on enhancing our customers profitability. We offer a broad range of solutions to make any service bay more productive.



Modular Inground Lifts



Hydraulic Portable Lifts



Four-Post Lifts



Parallelogram Lifts



Low-Rise Lifts



Revolution® Lifts



Two-Post Lifts



Suspended Pit Lifts



Floor Running Pit Lifts



Productivity Jacks



Inground Lifts



Four-Post Lifts

Rotary World Headquarters North America Contact Information

2700 Lanier Drive
Madison, IN 47250, USA
www.rotarylif.com

Sales: p 800.640.5438
f 800.578.5438
e userlink@rotarylif.com
Tech. Support: p 800.445.5438
f 800.822.6502
e userlink@rotarylif.com

World Wide Contact Information

World Headquarters/USA: 1.812.273.1622
Canada: 1.905.812.9920
European HQ/Germany: +49.771.9233.0
United Kingdom: +44.178.747.7711

Australasia: +60.3.7660.0285
Latin America/Caribbean: 1.812.273.1622
Middle East/Northern Africa: +49.771.9233.0
Southern Africa: 1.812.273.1622



Lit# pt&eGuidePAS_2013.02
©2013 VEHICLE SERVICE GROUP™, Printed in U.S.A., All Rights Reserved. Unless otherwise indicated, ROTARY, Vehicle Service Group, DOVER and all other trademarks are property of Dover Corporation and its affiliates.

